

ABSTRACT COST OF 50 BEDDED RCC MODEL BUILDING OF URBAN SHELTER FOR HOMELESS		
S. No.	Description of Items	Cost (Rs.)
1	Foundation	7,89,901.89
2	Ground Floor	8,10,707.50
3	First Floor	8,37,282.64
4	Second Floor	8,40,819.15
5	Terrace+Septic Tank	2,23,949.73
6	Total	35,02,660.92
	Add 20% for Carriage	7,00,532.18
	Total (1+2+3+4+5+6)	42,03,193.10
	Add 8% for Electrification	3,36,255.45
	Add 8% for Sanitary fittings	3,36,255.45
		48,75,704.00
	Add Cntingency 1%	48,757.04
	Grand Total	49,24,461.03
	Say	49,33,000.00

**ABSTRACT COST OF 50 BEDDED RCC MODEL BUILDING OF
URBAN SHELTER FOR HOMELESS**

FOUNDATION & UP TO GROUND FLOOR										
S.N.	Item Description	Unit	No.	L	B	H	Quantity	Rate	Cost	REMARK /SOR
1	Earth work in excavation in foundation trenches or drains(notexceeding 1.5 m in width or 10 sqm on plan) including dressing of sides and ramming of bottoms, lift upto 1.5 m . including getting out the excavated soil and disposal of surplus excavated soil asdirected, within a lead of 50 m.									
a	Earth work footing	cu.m	as per master sheet				150.35	205.20	30,852.33	2.8.1
b	Earth work for foundation around three side of rain basera platform	cu.m	1	55.4	0.25	0.1	1.39	205.20	284.20	2.8.1
2	Supplying and Filling in plinth with local sand and under floors including, watering, ramming consolidating and dressing complete.									
a	front side 2 m wide	cu.m	1	12.2	2	0.6	14.64		-	
b	Left Side 1.5m wide	cu.m	1	10.9	1.5	0.6	9.81		-	
c	Right side 1.56m wide	cu.m	1	10.9	1.56	0.6	10.20		-	
d	Plinth level Filling	cu.m	1	13.4	8.64	0.75	86.83		-	
e	Below footing	cum					4.49		-	
	Total qty						125.98	192.50	24,250.31	2.28
3	Providing and laying in position cement concrete of specifiedgrade exluding the cost of centring and shuttering-all work upto plinth level. 1:4:8 (1 Cement :4 coarse sand :8 graded stone agregate 40 mm nominal size)		as per master sheet				6.74	2346.90	15,810.77	4.1.8

**ABSTRACT COST OF 50 BEDDED RCC MODEL BUILDING OF
URBAN SHELTER FOR HOMELESS**

FOUNDATION & UP TO GROUND FLOOR										
S.N.	Item Description	Unit	No.	L	B	H	Quantity	Rate	Cost	REMARK/SOR
4	Providing and laying in position cement concrete of specified grade excluding the cost of centring and shuttering-all work upto plinth level. 1:2:4 (1 Cement : 2 coarse sand : 4 graded stone aggregate 20 mm nominal size)								-	
a	Base concrete wall of Plateform	cu.m	1	55.4	0.23	0.075	0.96		-	
b	plateform plinth level front	cu.m	1	12.2	2	0.075	1.83		-	
c	platforam plinth side1.5	cu.m	1	10.9	1.5	0.075	1.23		-	
d	platforam plinth side1.56	cu.m	1	10.9	1.56	0.075	1.28		-	
e	PCC (Flooring)	cu.m	1	13.4	8.64	0.075	8.68		-	
	Total qty						13.97	3323.10	46,425.04	4.1.3
5	Reinforced cement concrete work in beams, suspended floors, roofs having slope up to 15, landings, balconies, shelves, chajjas, lintels, bands, plain window sills, staircases and spiral stair cases up to floor five level excluding the cost of centring, shuttering, finishing and reinforcement with 1:1.5:3(1 cement:1.5 coarse sand:3 graded stone aggregate 20 mm nominal size). window chhaja.	cu.m								
a	footing	cu.m		as per master sheet			27.48		-	
b	column up to plinth level	cu.m		as per master sheet			1.77		-	
c	beam	cu.m		as per master sheet			5.57		-	
	Total qty	cum					34.81	3881.20	1,35,110.34	5.2.2

**ABSTRACT COST OF 50 BEDDED RCC MODEL BUILDING OF
URBAN SHELTER FOR HOMELESS**

FOUNDATION & UP TO GROUND FLOOR										
S.N.	Item Description	Unit	No.	L	B	H	Quantity	Rate	Cost	REMARK/SOR
	Foundations, footings,bases of columns etc for mass concrete	sq.m	from master sheet				37.07	166.70	6,179.99	5.9.1
	Colums, Pillars, Piers , Abutments Posts and Struts	sq.m	from master sheet				21.93	166.70	3,655.73	5.9.1
	Lintels , Beam, Plinth beams, girders, ressumers and cantilevers	sq.m	from master sheet				48.40	166.70	8,068.11	5.9.1
	Cost up to Foundation								7,89,901.89	

ABSTRACT COST OF 50 BEDDED RCC MODEL BUILDING OF URBAN SHELTER FOR HOMELESS

DETAIL MEASUREMENTS AND ABSTRACT COST OF G FLOOR

S.N.	Item Description	Unit	No.	L	B	H	Quantity	Rate	Cost	SOR /REMARKS
1	Reinforced cement concrete work in beams, suspended floors, roofs having slope up to 15, landings, balconies, shelves, chajjas, lintels, bands, plain window sills, staircases and spiral stair cases up to floor five level excluding the cost of centring, shuttering, finishing and reinforcement with 1:1.5:3(1 cement:1.5 coarse sand:3 graded stone aggregate 20 mm nominal size). window chhaja.									5.2.2
a	column	cu.m	14	0.45	0.23	2.75	3.98			
b	all beam lintel	cu.m	1	80.67	0.23	0.3	5.57			
d	D	cu.m	1	1.5	0.23	0.15	0.05			
e	D1	cu.m	1	1.3	0.23	0.15	0.04			
f	D2	cu.m	5	1.05	0.23	0.15	0.18			
g	WINDOW 1M	cu.m	11	1.3	0.23	0.15	0.49			
h	WINDOW 1.2M	cu.m	2	1.5	0.23	0.15	0.10			
i	WINDOW 0.6M	cu.m	5	0.9	0.23	0.15	0.16			
	Chhaja	cu.m								
j	D	cu.m	1	1.5	0.6	0.1	0.09			
k	W	cu.m	11	1.3	0.6	0.1	0.86			
l	W1	cu.m	2	1.5	0.6	0.1	0.18			
m	W2	cu.m	5	0.9	0.6	0.1	0.27			
n	RCC SLAB (1st floor)	cu.m	1	13.5	9.1	0.15	18.43			
2	STAIR CASE									
a	Flight slab	cu.m	2	2.62	1.2	0.15	0.94			
b	Landing Gr. floor	cu.m	1	1.2	2.4	0.15	0.43			
	Total Qty.						31.78			
	DEDUCTION OF SLAB(stair case)	cu.m	-1	3.77	2.14	0.15	-1.21			

DETAIL MEASUREMENTS AND ABSTRACT COST OF G FLOOR										
S.N.	Item Description	Unit	No.	L	B	H	Quantity	Rate	Cost	SOR /REMARKS
	Total Qty.						30.57	4436.60	1,35,631.25	
3	Reinforcement for RCC work including	kg	30.57	1.50%	7850		3599.73	65.85	2,37,042.49	5.22.7b
4	Brick work with bricks of class designation 100A in foundations and plinth in :Cement mortar 1 :6 (1 cement: 4 coarse sand)									6.1.14/A+ 6.3A
	internal 9" wall	cu.m	1	3.77	0.23	2.75	2.38			
	outer wall 9"	cu.m	1	44.15	0.23	2.75	27.92			
	Stair Case Rise & tread	cu.m	18	1	0.25	0.08	0.36			
	deduction						0.00			
	D	cu.m	-1	1.2	0.23	2.3	-0.63			
	W	cu.m	-11	1	0.23	1.5	-3.80			
	W1	cu.m	-2	1.2	0.23	1.5	-0.83			
	W2	cu.m	-5	0.6	0.23	1.5	-1.04			
	COLUM	cu.m	-14	0.45	0.23	3.1	-4.49			
	BEAM	cu.m	-1	80.67	0.23	0.3	-5.57			
	Total Qty.	cu.m					14.32	4427.50	63,396.55	
5	Half brick masonry with bricks of class designation 100A in foundations and plinth in : Cement mortar 1:4 (1 cement: 4 coarse send)									6.18A
a	ALL Brickwork 125mm	sq.m	1	19.1		2.75	52.53			
b	d2	sq.m	-5	0.75		1.5	-5.63			
	Total qty	sq.m					46.90	538.30	25,246.27	
6	12 mm thick cement plaster of mix: 1:4 (1 cement : 4 coarse sand)									13.11.2
	both sides of 9" thick main walls up to roof	sq.m	2	47.92	2.75		263.56			
	both sides of 4" thick main walls up to roof	sq.m	2	15.35	2.75		84.43			
	ceiling	sq.m	1	13.6		8.85	120.36			
	Deduction for doors D	sq.m	-2	1.20	2.3		-5.52			

DETAIL MEASUREMENTS AND ABSTRACT COST OF G FLOOR										
S.N.	Item Description	Unit	No.	L	B	H	Quantity	Rate	Cost	SOR /REMARKS
	Deduction for windows W	sq.m	-22	1	1.5		-33.00			
	Deduction for windows W1	sq.m	-4	1.2	1.5		-7.20			
	Deduction for windows W2	sq.m	-10	0.6	1.5		-9.00			
	Total Qty.	sq.m					413.63	100.30	41,486.59	
7	40 mm thick marble chips flooring rubbed and polished to granolithic finish, under layer 34 mm thick cement concrete 1:2:4(1 cement:2 coarse sand:4 graded stone aggregate 12.5 mm nominal size) and top layer 6 mm thick with white, black, chocolate, grey, yellow or Baroda green marble chips of sizes from 1 mm to 4 mm nominal size laid in cement marble powder mix 3:1(3 cement: 1 marble powder) by weight in proportion of 4:7 (4 cement marble powder mix:7 marble chips) by volume including cement slurry etc. complete. Dark shade pigment with ordinary cement	sq.m	1	13.4	8.64		115.776			
a	front (out side)	sq.m	1	12.2	2		24.40			
b	1.5m (out side)	sq.m	1	10.9	1.5		16.35			
c	1.56m (out side)	sq.m	1	13.5	1.56		21.06			
d	Skirting	sq.m	1	84.68	0.1		8.468			
e	Rise & Tread	sqm	18	1	0.41		7.38			
f	Landing Gr. floor	sqm	1	1.2	2.14		2.57			
	deduction of staircase	sq.m	-1	3.77	2.14		-8.0678			
	Net Floor area	sq.m					187.93	408.3	76733.53	11.9.1
8	Applying one coat of cement primer of approved brand and manufacture on wall surface:	sqm					445.90	24.90	11102.79	13.78.1

DETAIL MEASUREMENTS AND ABSTRACT COST OF G FLOOR										
S.N.	Item Description	Unit	No.	L	B	H	Quantity	Rate	Cost	SOR /REMARKS
9	Distemping with oil bound washable distemper of approved brand and manufacturer to give an even shade: New work (two or more coats) over and including priming coat with cement primer	sq.m							-	
	roof	sq.m	2	47.92	2.75		263.56			
	roof	sq.m	2	15.35	2.75		84.43			
	ceiling	sq.m	1	13.6		8.85	120.36			
	Deduction for doors D	sq.m	-2	1.00	2.3		-4.60		-	
	Deduction for windows W	sq.m	-13	1	1.2		-15.60		-	
	Deduction for windows v	sq.m	-5	0.6	0.75		-2.25			
	Total Qty.	sq.m					445.90	64	28,537.28	13.77.2
10	Centring and shuttering including strutting, propping etc and removal of form for									
	Columns, Pillars, Piers , Abutments Posts and Struts	sq.m	14	1.36		2.75	52.36	344.6	18,043.26	5.9.6
	Weather shade, Chajjas, corbels etc. including						0		-	5.9.20
	D	sq.m	1	1.7		0.7	1.19	379.4	451.49	
	W	sq.m	11	1.5		0.7	11.55	379.4	4,382.07	
	W1	sq.m	2	1.7		0.7	2.38	379.4	902.97	
	W2	sq.m	5	1.1		0.7	3.85	379.4	1,460.69	
	Suspended floors, roots, landings, balconies and access platform.	sq.m	1	13.6		8.85	120.36	275.6	33,171.22	5.9.3
	Stairs,(excluding landings) except spiral staircases								-	
	Stair slab	sq.m	2	2.9		1.5	8.7	321.5	2,797.05	5.9.7
	mid landing	sq.m	1	1.5		2.54	3.81	321.5	1,224.92	5.9.8
	Lintels , Beam, Plinth beams, girders, ressumers and cantilevers	sq.m	1	80.665		0.83	66.95195	251.3	16,825.03	5.9.5

DETAIL MEASUREMENTS AND ABSTRACT COST OF G FLOOR										
S.N.	Item Description	Unit	No.	L	B	H	Quantity	Rate	Cost	SOR /REMARKS
11	Providing and fixing in position collapsible steel shutters with vertical channels 20x10x2 mm and braced with flat iron diagonals 20x5 mm size with top and bottom rail of T-tron 40x40x6 mm with 40 mm dia steel pulleys complete with bolts, nuts, locking arrangement, stoppers, handles including applying a priming coat of approved steel primer.	sqm	1		1.2	2.3	2.76	4,115.60	11,359.06	10.5
12	Providing and fixing steel glazed doors, windows and ventilators of standard rolled steel sections, joints mitered and welded with 15x3 mm lugs 10 cm long with steel lugs embedded in cement concrete blocks 15x10x10 cm of 1:3:6 (1 cement: 3 coarse sand : 6 graded stone aggregate 20 mm nominal size) or with wooden plugs and screws or rawl plugs and screws or with fixing clips or with bolts and nuts as required, including providing and fixing of glass panes with glazing clips and special metal-sash putty of approved make complete including applying a priming coat of approved steel primer; excluding the cost of metal beading and other fitting except necessary hinges or pivots as required.	sqm					31.075	2928.1	90,990.71	10.12.1

DETAIL MEASUREMENTS AND ABSTRACT COST OF G FLOOR										
<i>S.N.</i>	<i>Item Description</i>	<i>Unit</i>	<i>No.</i>	<i>L</i>	<i>B</i>	<i>H</i>	<i>Quantity</i>	<i>Rate</i>	<i>Cost</i>	<i>SOR /REMARKS</i>
13	Extra for providing and fixing steel beading of approved shape and section with screws instread of glaxing clips and met. Sash putty in steel doors, windows, Ventilators and comosite units.									
	Steel doors.	sqm		from master sheet			13.225	286.8	3,792.93	10.13A
	Steel windos.	sqm					15.6	342.5	5,343.00	10.13B
	Steel ventilations.	sqm					2.25	349.5	786.38	10.13C
Total									8,10,707.50	

DETAIL MEASUREMENTS AND ABSTRACT COST OF 1ST FLOOR

S.N.	Item Description	Unit	No.	L	B	H	Quantity	Rate	Cost	REMARK/ SOR
	ALL Brickwork 230mm	cu.m	1	48.4	0.23	2.75	30.61			
	tread & riser	cu.m	18	1	0.25	0.08	0.36			
	deduction						0.00			
	W	cu.m	-12	1	0.23	1.5	-4.14			
	W1	cu.m	-1	1.2	0.23	1.5	-0.41			
	W2	cu.m	-6	0.6	0.23	1.5	-1.24			
	COLUM	cu.m	-14	0.45	0.3	2.75	-5.20			
	BEAM	cu.m	-1	47.92	0.45	0.23	-4.96			
	Total Qty.	cu.m					15.02	4427.50	66,500.08	
5	Half brick masonry with bricks of class designation 100A in foundations and plinth in : Cement mortar 1:4 (1 cement: 4 coarse sand)									
a	ALL Brickwork 230mm	sq.m	1	20.39		2.75	56.07			
b	d2	sq.m	-5	0.75		1.5	-5.63			
	Total qty						50.45	538.30	27,155.89	
6	12 mm thick cement plaster of mix: 1:4 (1 cement : 4 coarse sand)									
	Both sides of 9" thick Main walls up to roof	sq.m	2	47.92	2.75		263.56			
	Both sides of 4" thick Main walls up to Sill roof	sq.m	2	20.39	2.75		112.15			
	ceiling	sq.m	1	13.6		8.85	120.36			
	Deduction for doors D	sq.m	-2	1.20	2.3		-5.52			
	Deduction for windows W	sq.m	-24	1	1.5		-36.00			
	Deduction for windows W1	sq.m	-2	1.2	1.5		-3.60			
	Deduction for windows W2	sq.m	-12	0.6	1.5		-10.80			
	Total Qty.	sq.m					440.15	100.30	44,146.54	

DETAIL MEASUREMENTS AND ABSTRACT COST OF 1ST FLOOR

S.N.	Item Description	Unit	No.	L	B	H	Quantity	Rate	Cost	REMARK/ SOR
7	40 mm thick marble chips flooring rubbed and polished to granolithic finish, under layer 34 mm thick cement concrete 1:2:4(1 cement:2 coarse sand:4 graded stone aggregate 12.5 mm nominal size) and top layer 6 mm thick with white, black, chocolate, grey, yellow or Baroda green marble chips of sizes from 1 mm to 4 mm nominal size laid in cement marble powder mix 3:1(3 cement: 1 marble powder) by weight in proportion of 4:7 (4 cement marble powder mix:7 marble chips) by volume including cement slurry etc. complete. Dark shade pigment with ordinary cement	sq.m	1	13.5	8.55		115.425			
	Skirting	sq.m	1	84.78	0.1		8.478			
	Rise & Tread	sqm	18	1	0.41		7.38			
	Landing 1st floor	sqm	1	1.2	2.14		2.57			
	deduction tiles	sq.m	-1	3.47	2.14		-7.4258			
	Net flooring area	sq.m					126.4252	408.3	51619.41	11.15.1
8	Centring and shuttering including strutting, propping etc and removal of form for									
	Columns, Pillars, Piers, Abutments Posts and Struts	sq.m	14	1.36		2.75	52.36	344.6	18,043.26	5.9.6
	Lintels, beams, plinth beams, girders, ressumers						0		-	
	Weather shade, Chajjas, corbels etc. including						0		-	5.9.20
	W	sq.m	12	1.5		0.7	12.6	379.4	4,780.44	
	W1	sq.m	1	1.7		0.7	1.19	379.4	451.49	
	W2	sq.m	6	1.1		0.7	4.62	379.4	1,752.83	
	Suspended floors, roots, landings, balconies and access platform.	sq.m	1	13.6		8.85	120.36	275.6	33,171.22	5.9.3
	Stairs, (excluding landings) except spiral staircases						0		-	
	Stair slab	sq.m	2	2.9		1.5	8.7	321.5	2,797.05	5.9.7
	landing	sq.m	1	1.5		2.54	3.81	321.5	1,224.92	5.9.8
	Lintels, Beam, Plinth beams, girders, ressumers and cantilevers	sq.m	1	80.665		0.91	73.40515	251.3	18,446.71	5.9.5
9	Applying one coat of cement primer of approved brand and manufacture on wall surface:	sqm					440.15	24.90	10959.61	13.78.1

DETAIL MEASUREMENTS AND ABSTRACT COST OF 1ST FLOOR

S.N.	Item Description	Unit	No.	L	B	H	Quantity	Rate	Cost	REMARK/ SOR
10	Distemping with oil bound washable distemper of approved brand and manufacturer to give an even shade: New work (two or more coats) over and including priming coat with cement primer									
	Both sides of 9" thick Main walls up to Sill level	sq.m	2	47.92	2.75		263.56		-	
	Both sides of 4" thick Main walls up to Sill level	sq.m	2	20.39	2.75		112.15		-	
	ceiling	sq.m	1	13.6		8.85	120.36			
	Deduction for doors D	sq.m	-2	1.20	2.3		-5.52		-	
	Deduction for windows W	sq.m	-24	1	1.5		-36.00		-	
	Deduction for windows W1	sq.m	-2	1.2	1.5		-3.60		-	
	Deduction for windows W2	sq.m	-12	0.6	1.5		-10.80		-	
	Total Qty.	sq.m					440.15	64.00	28,169.28	13.77.2
11	Providing and fixing steel glazed doors, windows and ventilators of standard rolled steel sections, joints mitered and welded with 15x3 mm lugs 10 cm long with steel lugs embedded in cement concrete blocks 15x10x10 cm of 1:3:6(1 cement: 3 coarse sand : 6 graded stone aggregate 20 mm nominal size) or with wooden plugs and screws or rawl plugs and screws or with fixing clips or with bolts and nuts as required, including providing and fixing of glass panes with glazing clips and special metal-sash putty of approved make complete including applying a priming coat of approved steel primer; excluding the cost of metal beading and other fitting except necessary hinges or pivots as required.	sqm					29.225	2928.1	85,573.72	10.12.1
12	Extra for providing and fixing steel beading of approved shape and section with screws instread of glaxing clips and met. Sash putty in steel doors, windows, Ventilators and comosite units.									
	Steel doors.	sqm		from master sheet			10.925	286.8	3,133.29	10.13A
	Steel windos.	sqm					15.6	342.5	5,343.00	10.13B
	Steel ventilations.	sqm					2.7	349.5	943.65	10.13C
	Total							Rs.	8,37,282.64	

ABSTRACT COST OF 50 BEDDED RCC MODEL BUILDING OF URBAN SHELTER FOR HOMELESS

DETAIL MEASUREMENTS AND ABSTRACT COST OF 2ND FLOOR

S.N.	Item Description	Unit	No.	L	B	H or D	Quantity	Rate	Cost	SOR/REMARKS
1	Reinforced cement concrete work in beams, suspended floors, roofs having slope up to 15, landings, balconies, shelves, chajjas, lintels, bands, plain window sills, staircases and spiral stair cases up to floor five level excluding the cost of centring, shuttering, finishing and reinforcement with 1:1.5:3(1 cement:1.5 coarse sand:3 graded stone aggregate 20 mm nominal size). window chhaja.									5.2.2
a	colum	cu.m	14	0.45	0.23	2.75	3.98			
b	all beam	cu.m	1	80.67	0.45	0.23	8.35			
c	lintel									
e	D1	cu.m	1	1.3	0.23	0.15	0.04			
g	WINDOW 1M	cu.m	12	1.3	0.23	0.15	0.54			
h	WINDOW 1.2M	cu.m	1	1.5	0.23	0.15	0.05			
i	WINDOW 0.6M	cu.m	6	0.9	0.23	0.15	0.19			
j	Chhaja	cu.m								
	W	cu.m	12	1.3	0.6	0.1	0.94			
	W1	cu.m	1	1.5	0.6	0.1	0.09			
	W2	cu.m	6	0.9	0.6	0.1	0.32			
	SLAB 2nd floor	cu.m	1	15.3	9.1	0.15	20.88			
2	STAIR CASE						0.00			
A	flight slab	cu.m	2	2.62	1.2	0.15	0.94			
b	Landing	cu.m	1	1.2	2.24	0.15	0.40			
	Total Qty.						36.74			
	DEDUCTION OF SLAB	cu.m	-1	3.77	2.14	0.15	-1.21			
	Total Qty.						35.53	4436.60	1,57,612.02	

DETAIL MEASUREMENTS AND ABSTRACT COST OF 2ND FLOOR										
S.N.	Item Description	Unit	No.	L	B	H or D	Quantity	Rate	Cost	SOR/REMARKS
3	Reinforcement for RCC work including straightening cutting , bending, placing in position and binding all complete (@1.5% of RCC)	kg	35.53	1.50%	7850		4183.12	65.35	2,73,366.68	5.22.7B
4	Brick work with bricks of class designation 100A in foundations and plinth in :Cement mortar 1 :.6 (1 cement: 4 coarse sand)									6.1.14/A
	ALL Brickwork 230mm	cu.m	1	48.4	0.23	2.75	30.61			
	tread & riser	cu.m	18	1.2	0.25	0.08	0.43			
	deduction						0.00			
	W	cu.m	-12	1	0.23	1.5	-4.14			
	W1	cu.m	-1	1.2	0.23	1.5	-0.41			
	W2	cu.m	-6	0.6	0.23	1.5	-1.24			
	COLUM	cu.m	-14	0.45	0.23	3.1	-4.49			
	BEAM	cu.m	-1	80.67	0.45	0.23	-8.35			
	Total Qty.	cu.m					12.41	4427.50	54,937.63	
5	Half brick masonry with bricks of class designation 100A in foundations and plinth in : Cement mortar 1:4 (1 cement: 4 coarse send)									6.18A
a	ALL Brickwork 230mm	sq.m	1	20.39		2.75	56.07			
b	d2	sq.m	-5	0.75		1.5	-5.63			
	Total qty						50.45	538.30	27,155.89	
6	12 mm thick cement plaster of mix: 1:4 (1 cement : 4 coarse sand)									13.11.2
	Both sides of 9" thick Main walls	sq.m	2	47.92	2.75		263.56			
	Both sides of 4" thick Main walls	sq.m	2	20.39	2.75		112.15			
	Ceiling	sq.m	1	13.6		8.85	120.36			
	Deduction for doors D	sq.m	-2	1.20	2.3		-5.52			

DETAIL MEASUREMENTS AND ABSTRACT COST OF 2ND FLOOR										
S.N.	Item Description	Unit	No.	L	B	H or D	Quantity	Rate	Cost	SOR/REMARKS
	Deduction for windows W	sq.m	-24	1	1.5		-36.00			
	Deduction for windows W1	sq.m	-2	1.2	1.5		-3.60			
	Deduction for windows W2	sq.m	-12	0.6	1.5		-10.80			
	Total Qty.	sq.m					440.15	100.30	44,146.54	
7	40 mm thick marble chips flooring rubbed and polished to granolithic finish, under layer 34 mm thick cement concrete 1:2:4(1 cement:2 coarse sand:4 graded stone aggregate 12.5 mm nominal size) and top layer 6 mm thick with white, black, chocolate, grey, yellow or Baroda green marble chips of sizes form 1 mm to 4 mm nominal size laid in cement marble powder mix 3:1(3 cement: 1 marble powder) by weight in proportion of 4:7 (4 cement marble powder mix:7 marble chips) by volume including cement slurry etc. complete. Dark shade pigment with ordinary cement								-	
a	in side room	sq.m	1	13	8.6		111.80			
	Skirting	sq.m	1	84.28	0.1		8.428			
	Rise & Tread	sqm	18	1	0.41		7.38			
	Landing 2nd floor	sqm	1	1.2	2.14		2.57			
	deduction of stair case	sq.m	-1	3.77	2.14		-8.07			
							122.11	408.3	49,856.78	11.15.1
8	Centring and shuttering including strutting, propping etc and removal of form for									
	Columns, Pillars,Piers ,Abutments Posts and Struts	sq.m	14	1.36		3.1	59.024	344.6	20,339.67	
	Weather shade, Chajjas, corbels etc. including						0		-	
	W	sq.m	12	1.5		0.7	12.6	379.4	4,780.44	

DETAIL MEASUREMENTS AND ABSTRACT COST OF 2ND FLOOR										
S.N.	Item Description	Unit	No.	L	B	H or D	Quantity	Rate	Cost	SOR/REMARKS
	W1	sq.m	1	1.7		0.7	1.19	379.4	451.49	
	W2	sq.m	6	1.1		0.7	4.62	379.4	1,752.83	
	Suspended floors, roots, landings, balconies and access platform.	sq.m	1	13.6		8.85	120.36	275.6	33,171.22	
	Stairs, (excluding landings) except spiral staircases						0		-	
	Stair slab	sq.m	2	2.9		1.5	8.7	321.5	2,797.05	
	mid land	sq.m	1	1.5		2.54	3.81	321.5	1,224.92	
	trade & riser	sq.m	18	1.2		1.6	34.56	321.5	11,111.04	
	Lintels, Beam, Plinth beams, girders, ressumers and cantilevers	sq.m	1	80.67		0.91	73.41	251.3	18,446.71	
9	Applying one coat of cement primer of approved brand and manufacture on wall surface:	sqm					440.15	24.90	10959.61	13.78.1
10	Distemping with oil bound washable distemper of approved brand and manufacturer to give an even shade: New work (two or more coats) over and including priming coat with cement primer	sq.m							-	
	Both sides of 9" thick Main walls up to Sill level	sq.m	2	47.92	2.75		263.56		-	
	Both sides of 4" thick Main walls up to Sill level	sq.m	2	20.39	2.75		112.15		-	
	ceiling	sq.m	1	13.6		8.85	120.36			
	Deduction for doors D	sq.m	-2	1.20	2.3		-5.52		-	
	Deduction for windows W	sq.m	-24	1	1.5		-36.00		-	
	Deduction for windows W1	sq.m	-2	1.2	1.5		-3.60		-	
	Deduction for windows W2	sq.m	-12	0.6	1.5		-10.80		-	
	Total Qty.	sq.m					440.15	64.00	28,169.28	13.77.2

DETAIL MEASUREMENTS AND ABSTRACT COST OF 2ND FLOOR										
S.N.	Item Description	Unit	No.	L	B	H or D	Quantity	Rate	Cost	SOR/REMARKS
11	Providing and fixing steel glazed doors, windows and ventilators of standard rolled steel sections, joints mitered and welded with 15x3 mm lugs 10 cm long with steel lugs embedded in cement concrete blocks 15x10x10 cm of 1:3:6(1 cement: 3 coarse sand : 6 graded stone aggregate 20 mm nominal size) or with wooden plugs and screws or rawl plugs and screws or with fixing clips or with bolts and nuts as required, including providing and fixing of glass panes with glazing clips and specialmetal-sash putty of approved make complete including applying a primingcoat of approved steel primer; excluding the cost of metal beading and other fitting except necessary hinges or pivots as required.	sqm					30.95	2928.1	90,624.70	10.12.1
12	Extra for providing and fixing steel beading of approved shape and section with screws instread of glaxing clips and met. Sash putty in steel doors, windows, Ventilators and comosite units.									
	Steel doors.	sqm		from master sheet			12.65	286.8	3,628.02	10.13A
	Steel windos.	sqm					15.6	342.5	5,343.00	10.13B
	Steel ventilations.	sqm					2.7	349.5	943.65	10.13C
	Total							Rs	8,40,819.15	

ABSTRACT COST OF 50 BEDDED RCC MODEL BUILDING OF URBAN SHELTER FOR HOMELESS

DETAIL MEASUREMENTS AND ABSTRACT COST OF MODEL DRAWING RAIN BASERA, TOP FLOOR

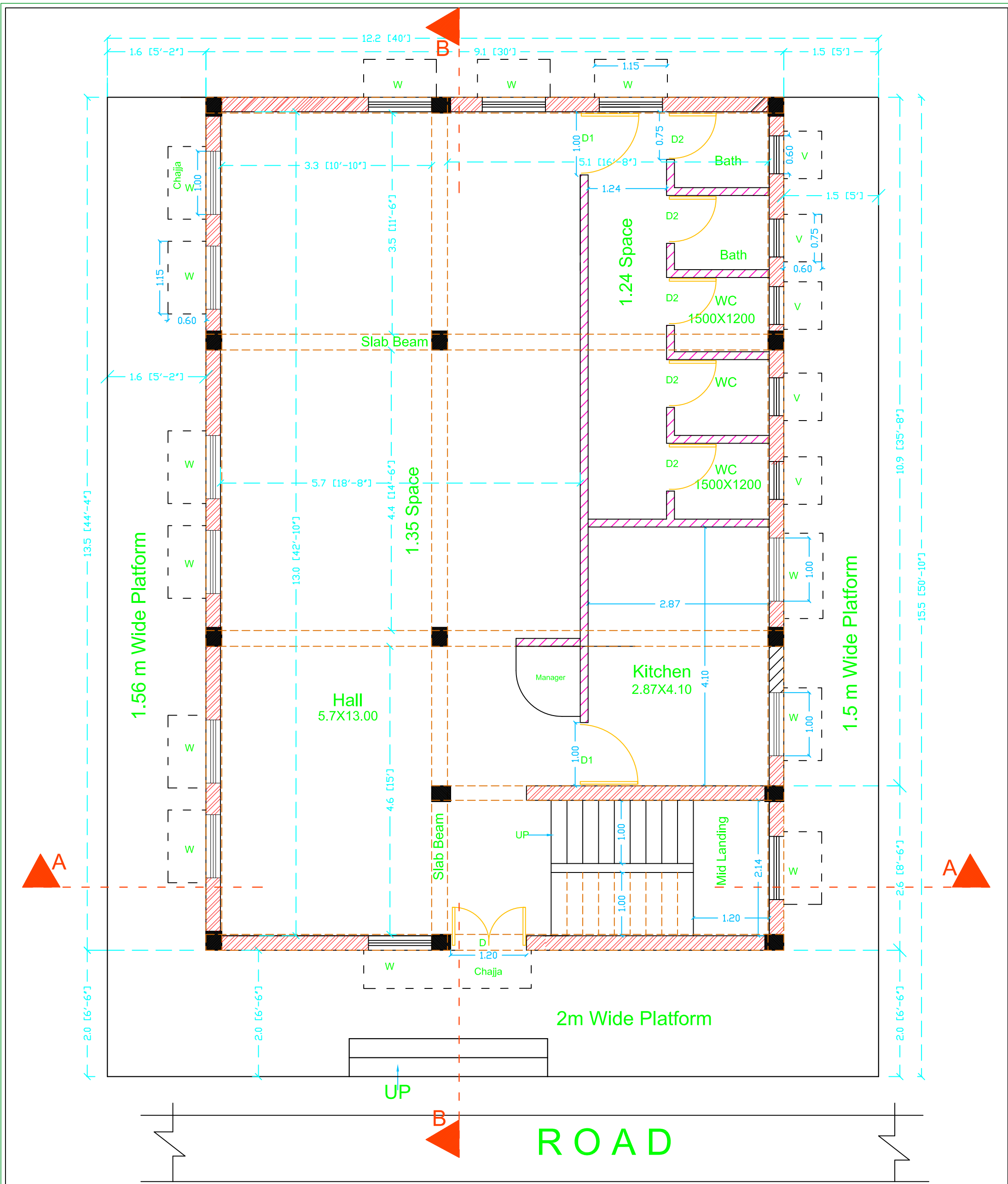
S.N.	Item Description	Unit	No.	L	B	D	Quantity	Rate	Cost	REMARK/S OR
1	Reinforced cement concrete work in beams, suspended floors, roofs having slope up to 15, landings, balconies, shelves, chajjas, lintels, bands, plain window sills, staircases and spiral stair cases up to floor five level excluding the cost of centring, shuttering, finishing and reinforcement with 1:1.5:3(1 cement:1.5 coarse sand:3 graded stone aggregate 20 mm nominal size). window chhaja.									5.2.2
a	Stair case colum	cu.m	4	0.45	0.23	2.3	0.95			
b	parapet column	cu.m	10	0.3	0.25	1	0.75			
c	all beam	cu.m	1	12.28	0.45	0.23	1.27			
d	lintel									
e	D1	cu.m	1	1.3	0.23	0.15	0.04			
f	WINDOW 1.2M	cu.m	1	1.5	0.23	0.15	0.05			
g	Chhaja	cu.m								
h	W1	cu.m	1	1.5	0.6	0.1	0.09			
	SLAB Head Room	cu.m	1	3	2.37	0.15	1.07			
	Total Qty.						4.23	4436.60	18,750.31	
2	Reinforcement for RCC work including straighting cutting , bending, placing in position and binding all complete (@1.5% of RCC)	kg	4.23	1.50%	7850		497.64	65.35	32,521.07	5.29.1F
3	Brick work with bricks of class designation 100A in foundations and plinth in :Cement mortar 1 :.6 (1 cement: 4 coarse sand)									
	stair case brickwork	cu.m	1	12.28	0.23	2.3	6.50			
	deduction colum	cu.m	-4	0.3	0.25	2.3	-0.69			
	W1	cu.m	-1	1.2	0.23	1.5	-0.41			
	Door	cu.m	-1	1	0.23	2.3	-0.53			
	BEAM	cu.m	-1	12.28	0.23	0.3	-0.85			
	parapet column	cu.m	-10	0.3	0.25	1	-0.75			

	parapet brick work	cu.m	1	37.46	0.23	1	8.62			
	Total Qty.	cu.m					11.88	4427.50	52,605.78	
4	12 mm thick cement plaster of mix: 1:4 (1 cement : 4 coarse sand)									
	stair case	sq.m	2	3.77	2.14		16.14			
	parapet brick work plaster	sq.m	2	12.28	3.1		76.14			
	Parapet wall		2	39.29	1.115		87.62			
	w	sq.m	-2	1.20	1.5		-3.60			
	door	sq.m	-2	1.00	2.5		-5.00			
	Total Qty.	sq.m					171.29	100.30	17,180.22	
5	12 mm cement plaster 1:3(1 cement: 3 coarse sand) finished with a floating coat of near cement	sqm	1	13.04	8.64		112.67	138.00	15,547.85	13.17.1
6	Applying one coat of cement primer of approved brand and manufacture on wall surface:	sqm					283.95	24.90	7070.45	13.78.1
7	Distemping with oil bound washable distemper of approved brand and manufacturer to give an even shade: New work (two or more coats) over and including priming coat with cement primer	sq.m					283.95	64.00	18,173.05	13.77.2
	Total Cost							Rs	1,61,848.73	

NAME OF WORK: CONSTRUCTION OF URBAN SHELTER FOR HOMELESS						
Abstract cost of Septic tank						
Reference from schedule of Rate of BCD, Effective From 15.09.2014						
Sr.	Description	Unit	Quantity	Rate in Rs.	Amount in Rs.	Reference
	SEPTIC TANK					
1	Earth work in foundation trenches or drains (not exceeding 1.5m width or 10 sqm on plan) including dressing of sides & ramming of bottom, lift upto 1.5m including getting cut the soil within a lead of 50m- all complete as per diction of E/l.	cum	27.50	205.20	5643.00	2.8.1
2	Brick on edge flooring with bricks of class designation 100A including cement slurry etc. complete in cement mortar. 1:6 (Brick Flooring)	sqm	13.750	365.10	5020.13	11.73
3	Providing and laying in position in position cement concrete of specified grade excluding the cost of centering and shuttering all work upto plinth level. Concrete grade 1:2:4	cum	1.38	3323.10	4569.26	4.1.3
4	Reinforcement cement concrete work in beams,suspended floors,roofs,having slope upto 15,landing,balconies.shelves,chajja,lintels,bands,plain window sills,staircase and spiral stair cases upto floor five level excluding the cost of centering,shuttering,finishing and reinforcement with 1:2:4	cum	1.38	4052	5571.50	5.3
5	Reinforcement for RCC work including straightening,cutting,bending,placing in position and binding all complete	kg	123.75	70.60	8736.75	5.22

6	Centering, shuttering, finishing etc – all complete jobs as per specification and direction of E/I.	sqm	10.00	344.40	3444.00	5.9.6
7	Brick work with bricks of class designation 100A in foundation and plinth in cement mortar 1:4	cum	5.80	4184.00	24262.93	6.1.12/1)
8	Providing 12mm cement plaster (1:4) mix - all complete jobs as per specification and direction of E/I.	sqm	31.30	100.30	3139.39	(13.11.2)
9	Providing and fixing in position pre-cast R.C.C. manhole(Circular shape 560 mm internal dia)	sqm	1.00	1714.50	1714.50	19.19.4.1
	Cover and frame of required shape and approved quality				62101.00	


6	Centering, shuttering, finishing etc – all complete jobs as per specification and direction of E/I.	sqm		5.00	2.00		10.00
7	Brick work with bricks of class designation 100A in foundation and plinth in cement mortar 1:4	cum					
	long wall (3.5+ .23+ .23=3.96m	cum	2	5.46	1.55	0.23	3.89
	short wall (1.2 m)	cum	2	2.00	1.55	0.23	1.43
	baffal wall	cum	2	2.00	1.20	0.10	0.48
		cum					5.80
8	Providing 12mm cement plaster (1:4) mix - all complete jobs as per specification and direction of E/I.						
	long wall (5.m)inner side	sqm	2	5.00	1.55		15.50
	short wall (2 m) inside	sqm	2	2.00	1.55		6.20
	baffal wall		4	2.00	1.20		9.60
		sqm					31.30
9	Man Hole cover 500 mm dia.	nos	1				1

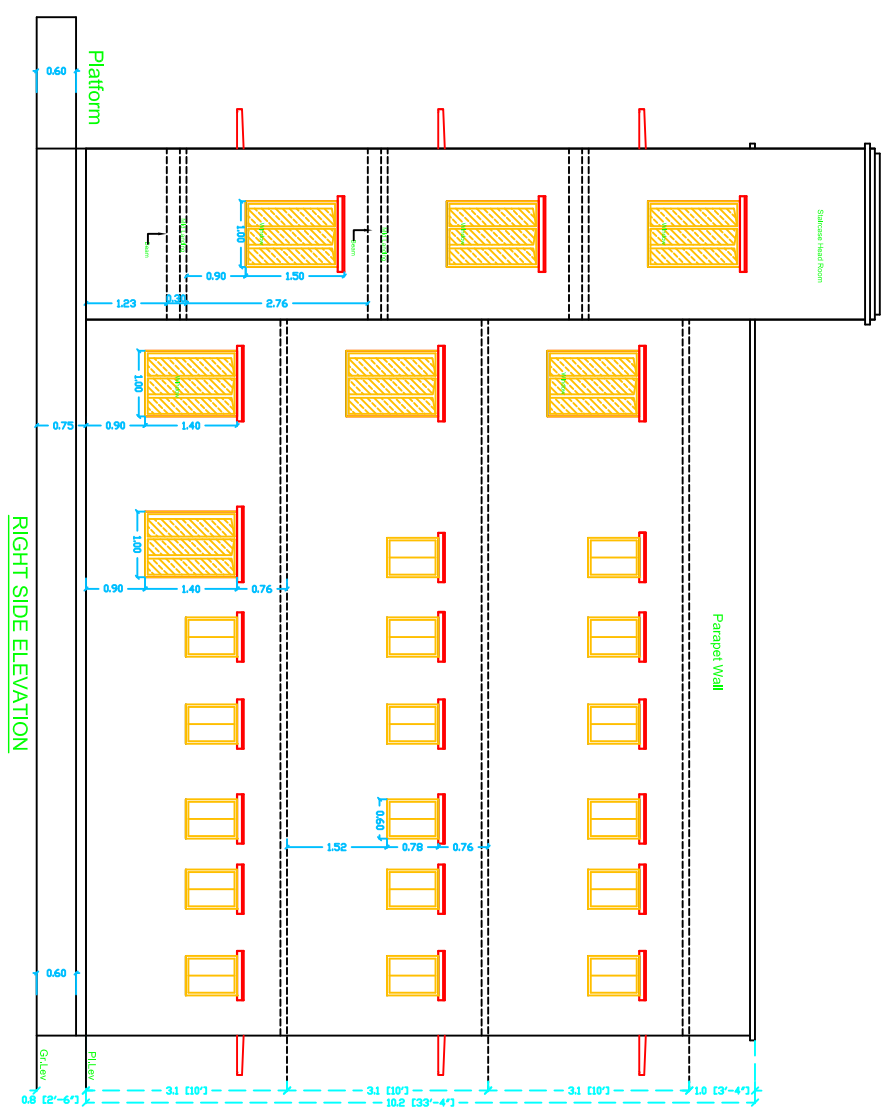
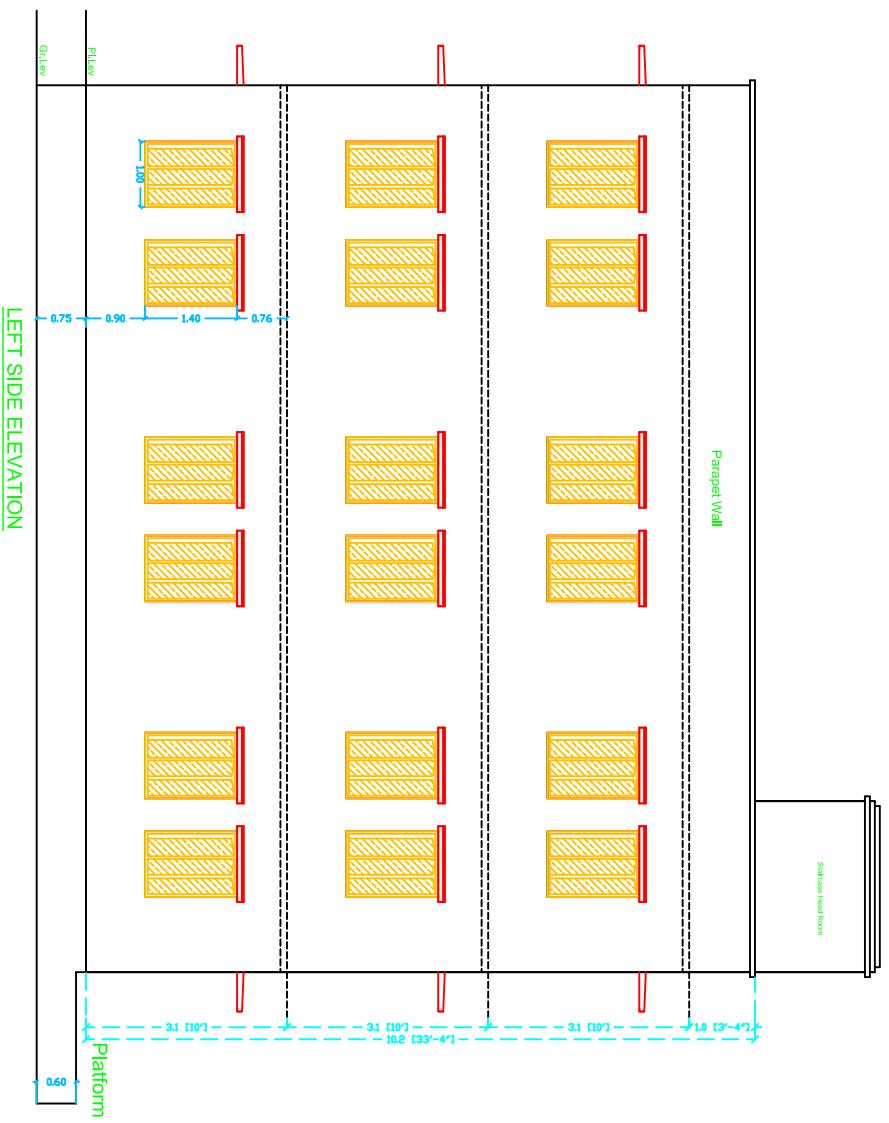
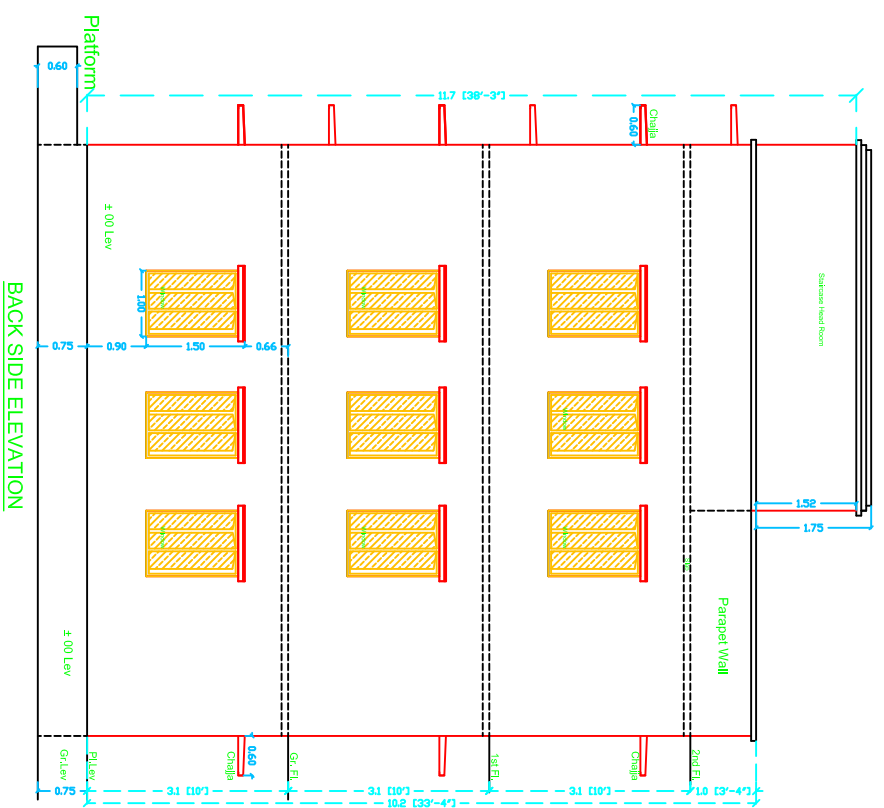
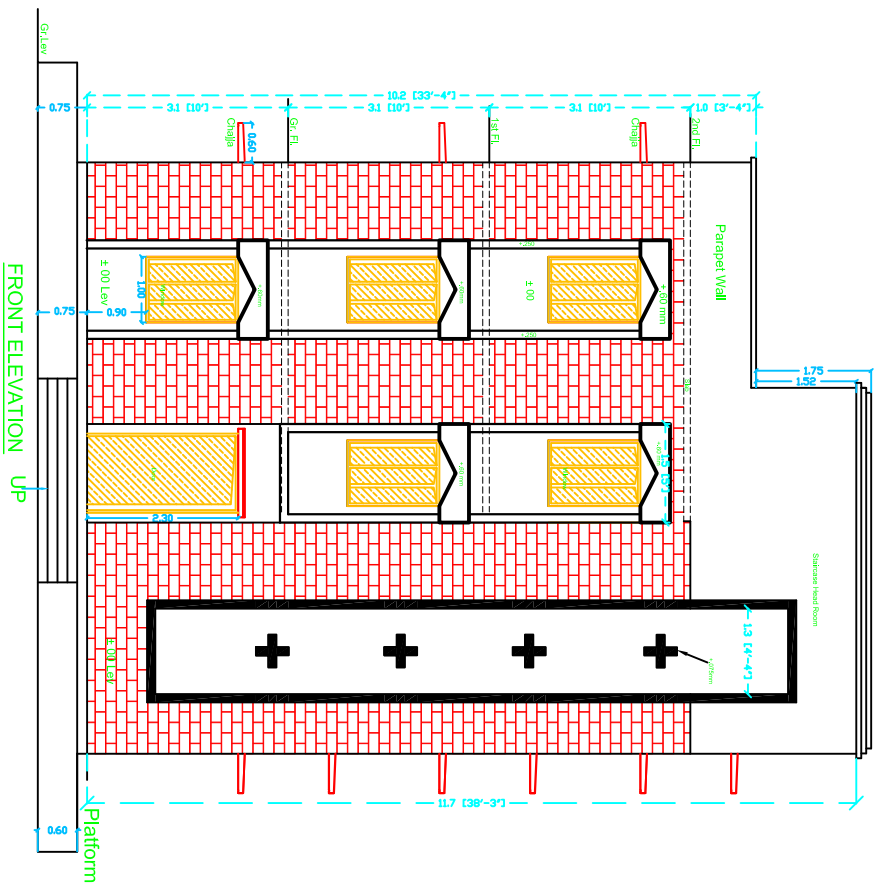


Schedule of Door & Window				
Type	Size	Sill Ht.	Lintel Ht.	Nos.
D	1.2X2.3	0m	2.3	1
D1	1.0X2.3	0m	2.3	2
D2	0.75X2.3	0m	2.3	5
W	1.0X1.2	0.9	2.3	13
V	0.6X0.75	1.52	2.3	5

All Dimension Are in Meters

Ground Floor
G + 2
(50 Bed)

Title Sheet:-		Model Shelter House	
Drawing Title		Ground Floor	
Date:-	Scale	Sheet No. - 1	
25/05/2014	As Shown		
Drawing No.-1	SPUR/1/	Rev. 0	
Prepared By.			
		SUPPORT PROGRAMME FOR URBAN REFORMS IN BIHAR (SPUR)	



Title Sheet:-

Title Sheet:- Urban Night Shelter (50 Bed)

Drawing Title Elevation

Date:- 25/05/2014
 Drawing No.- 4

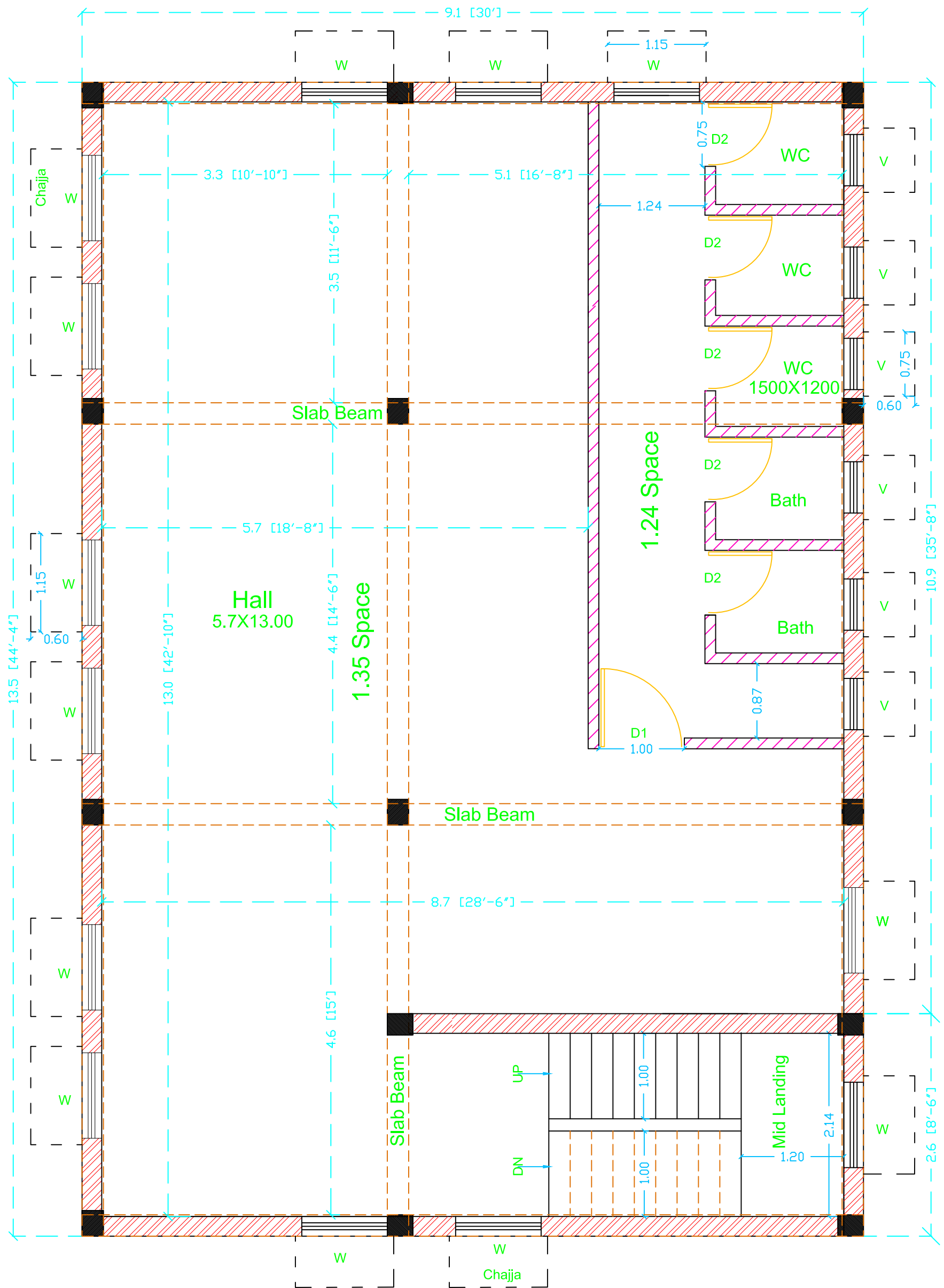
Scale As Shown
 Sheet No. - 4

SPUR/1/ Rev. 0

Prepared By.



SUPPORT PROGRAM FOR URBAN REFORMS IN BIHAR (SPUR)



Schedule of Door & Window

Type	Size	Sill Ht.	Lintel Ht.	Nos.
D1	1.0X2.3	0m	2.3	1
D2	0.75X2.3	0m	2.3	5
W	1.0X1.2	0.9	2.3	13
V	0.6X0.75	1.52	2.3	6

First Floor

Title Sheet:- **Urban Night Shelter**

Drawing Title **First Floor**

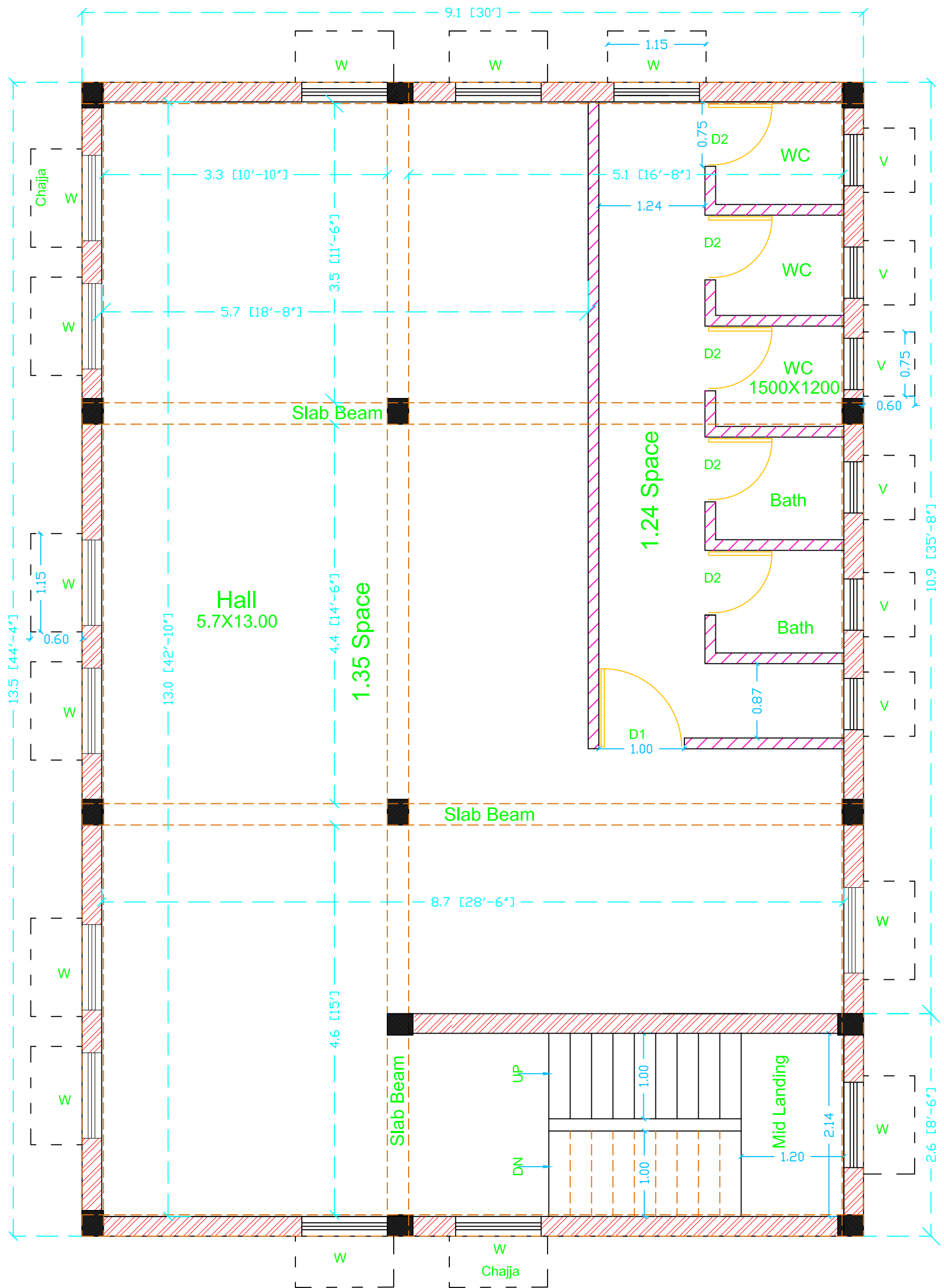
Date:- 25/05/2014 Scale As Shown Sheet No. - 2

Drawing No.-2 SPUR/1/ Rev. 0

Prepared By.



SUPPORT PROGRAMME FOR URBAN REFORMS IN BIHAR (SPUR)



Schedule of Door & Window

Type	Size	Sill Ht.	Lintel Ht.	Nos.
D1	1.0X2.3	0m	2.3	1
D2	0.75X2.3	0m	2.3	5
W	1.0X1.2	0.9	2.3	13
V	0.6X0.75	1.52	2.3	6

Second Floor

Title Sheet:- **Urban Night Shelter**

Drawing Title **Second Floor**

Date:-
25/05/2014

Scale
As Shown

Sheet No. - 3

Drawing No.-3

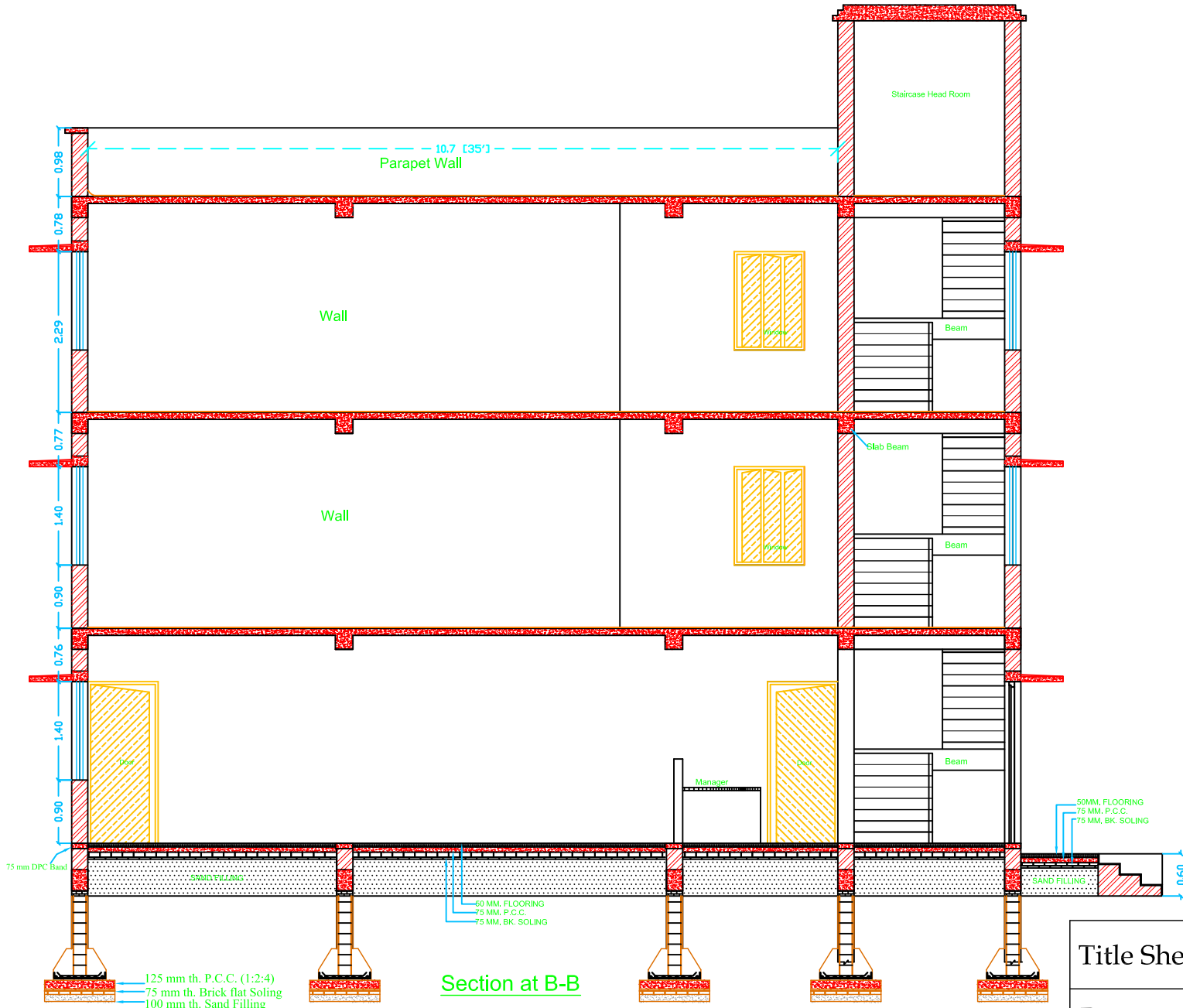
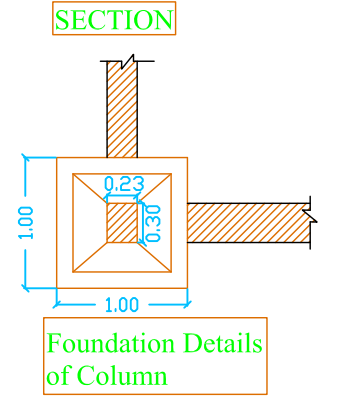
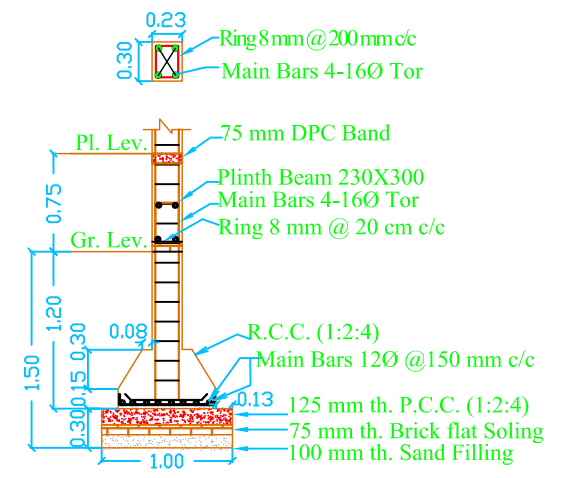
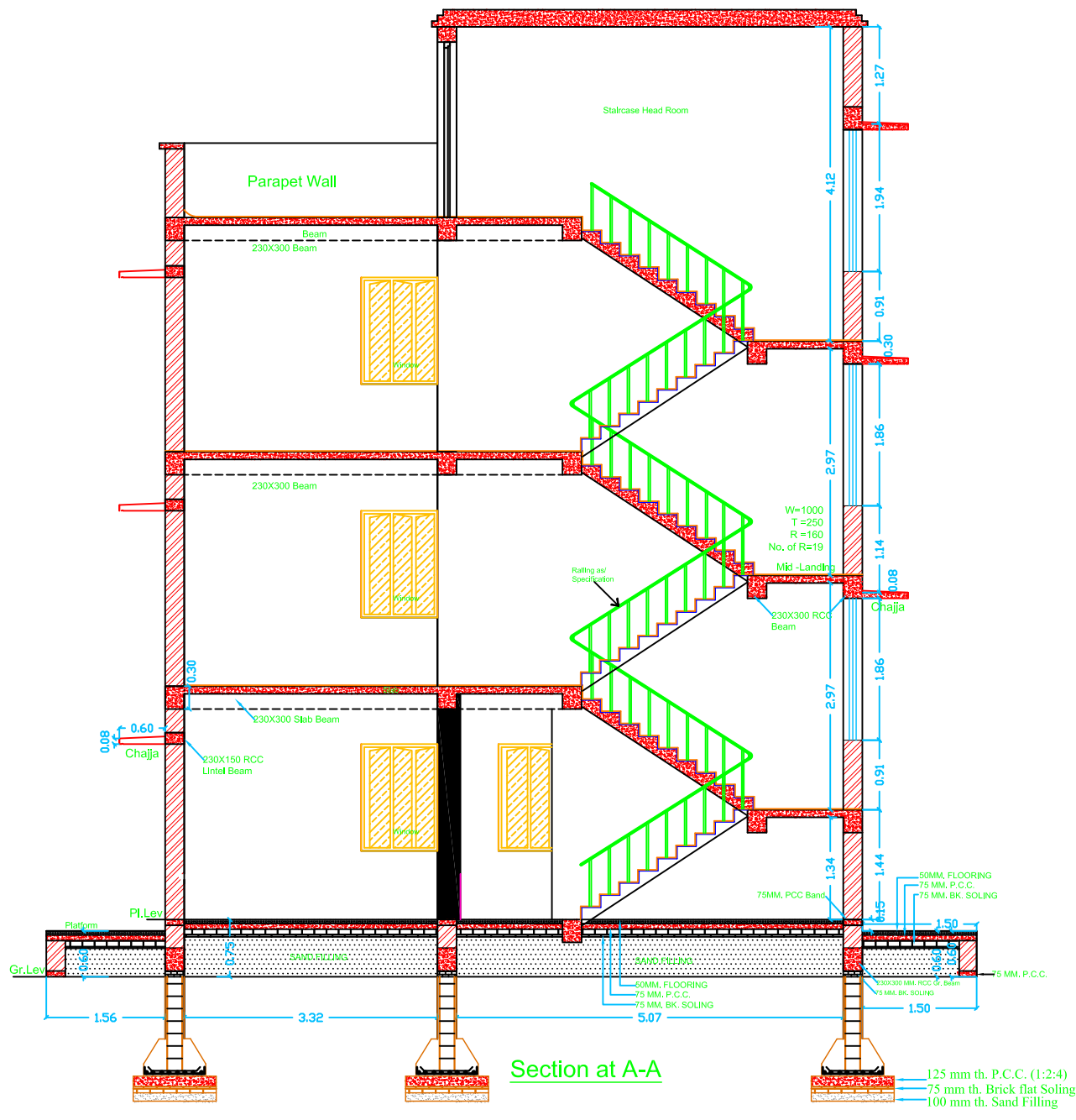
SPUR/1/


Rev. 0

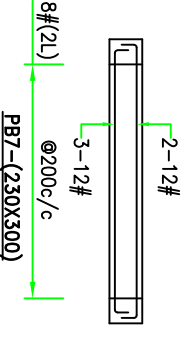
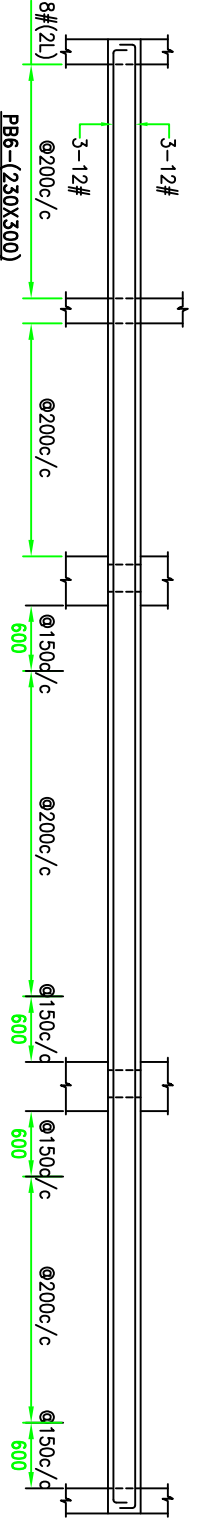
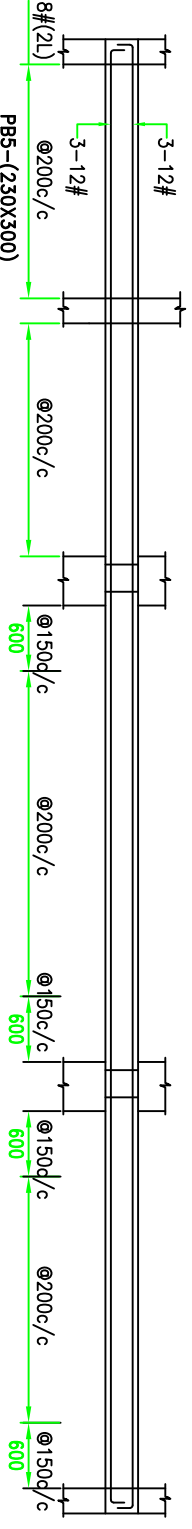
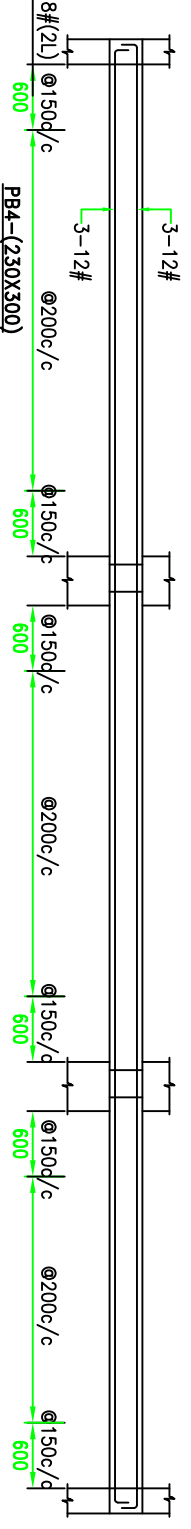
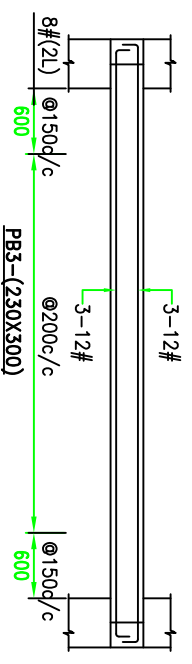
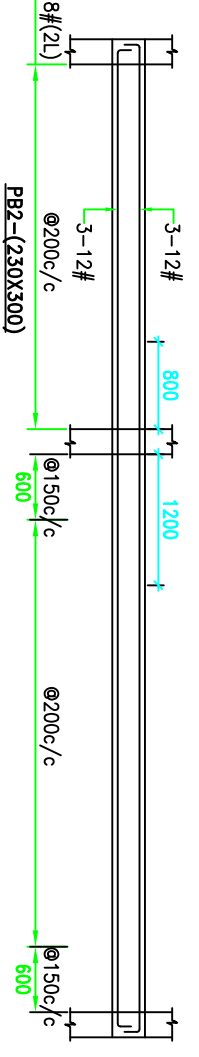
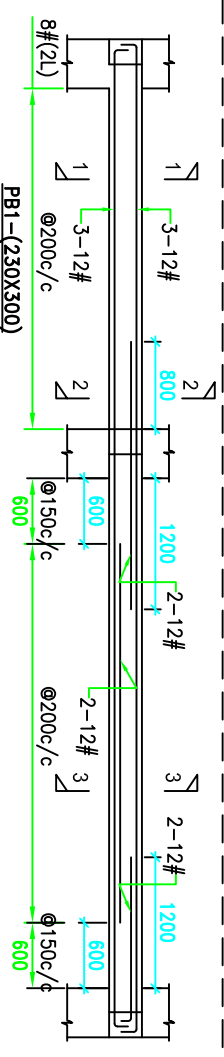
Prepared By.

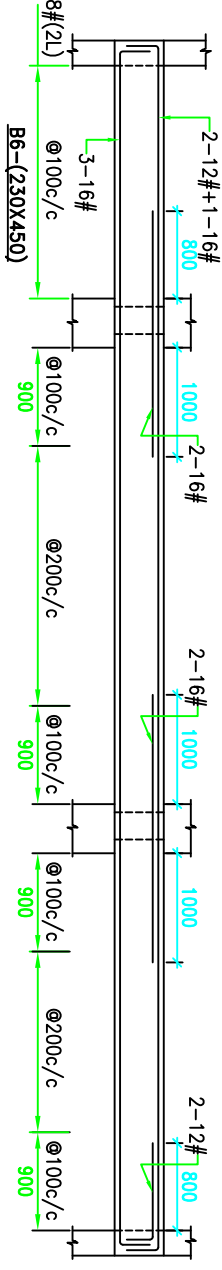
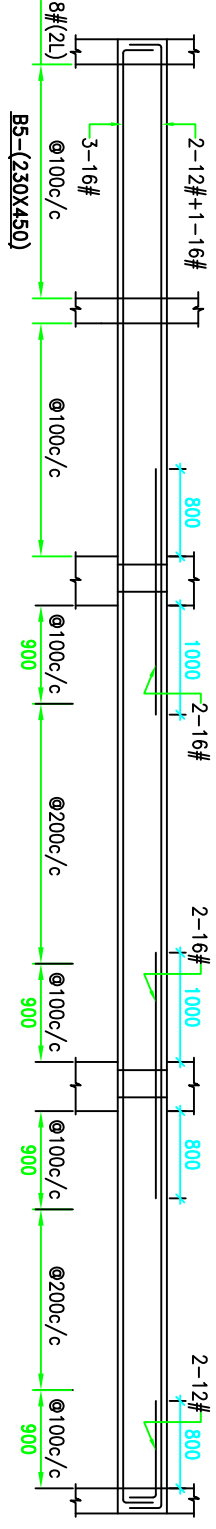
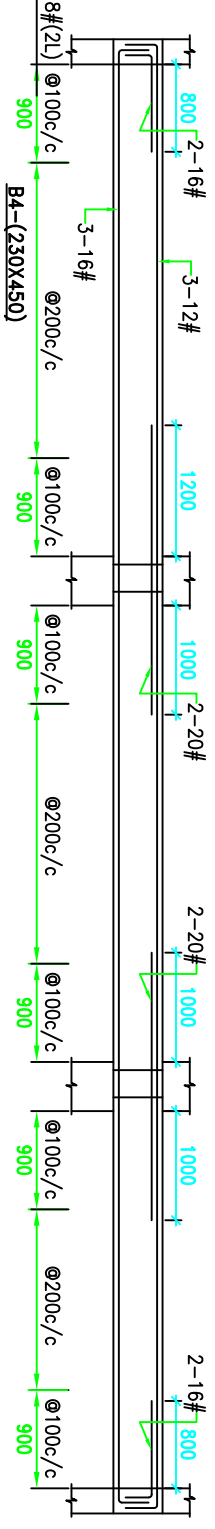
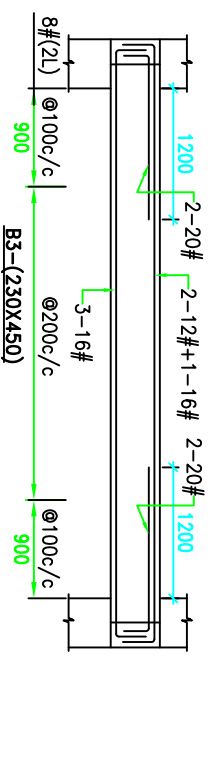
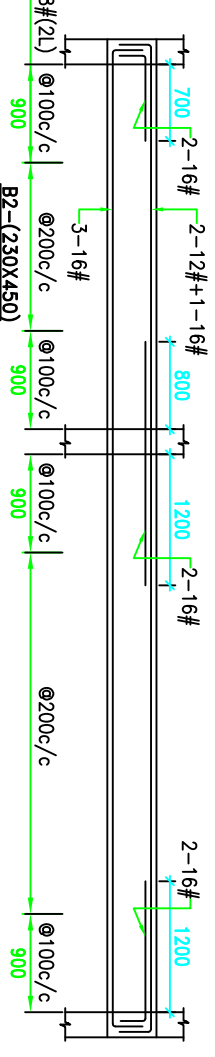
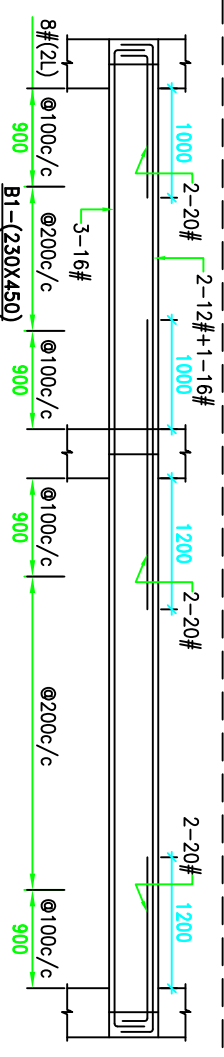


SUPPORT PROGRAMME FOR URBAN REFORMS IN BIHAR (SPUR)



Title Sheet:- Urban Night Shelter (50 Bed)		
Drawing Title	Section	
Date:- 25/05/2014	Scale As Shown	Sheet No. - 5
Drawing No.- 5	SPUR/1/	Rev. 0
Prepared By.		
 SUPPORT PROGRAMME FOR URBAN REFORMS IN BIHAR (SPUR)		



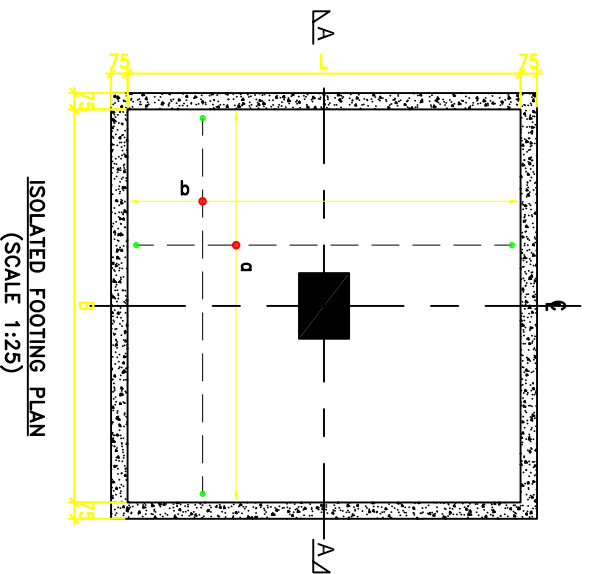
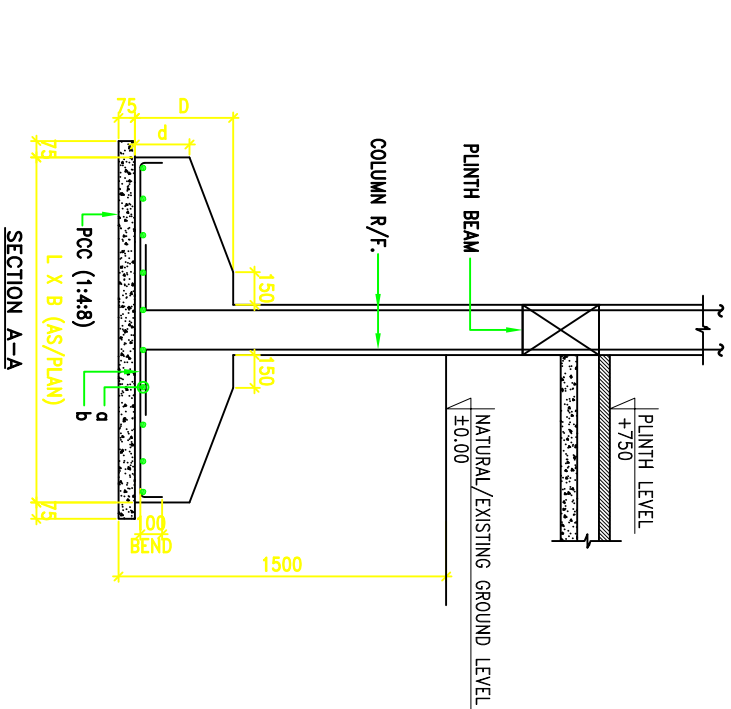


COLUMN SCHEDULE :-

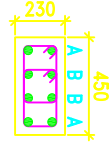

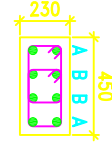

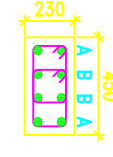

COL. NO.	SHAPE	FOUNDATION TO FIRST FLOOR	FIRST TO SECOND FLOOR	SECOND FLOOR TO TERMINATION	SHAPE OF TIES
C1		A = 4-25# B = 4-20#	A = 4-25# B = 4-20#	A = 4-16# B = 4-16#	
C2		A = 4-25# B = 4-20#	A = 4-25# B = 4-20#	A = 4-16# B = 4-16#	
C3		A = 4-25# B = 4-25#	A = 4-25# B = 4-20#	A = 4-20# B = 4-20#	

ISOLATED FOOTING SCHEDULE :-

FOOTING MARK	FOOTING SIZE			REINF. IN BOTH DIRECTIONS	
	DIMENSION IN M.M.			ALONG L	ALONG B
	B	L	D	d	b
F1	3250	3500	500	250	12T@125c/c
F2	3000	5000	450	--	AS/PLAN
F3	2700	3000	400	200	12T@150c/c
F4	2400	2600	350	150	12T@175c/c
F5	2100	2300	300	150	12T@200c/c

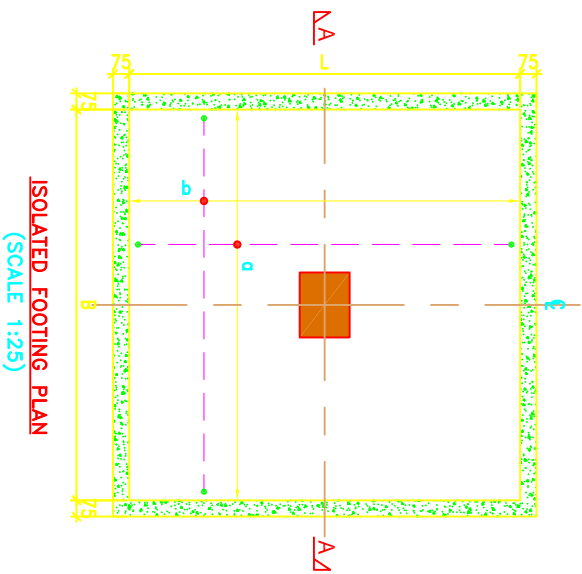
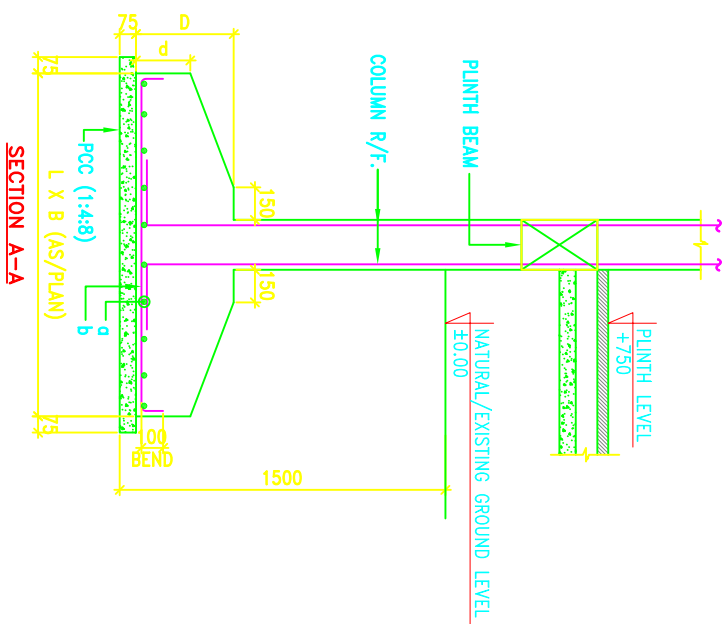


COLUMN SCHEDULE :-

COL. NO.	SHAPE	FOUNDATION TO FIRST FLOOR	FIRST TO SECOND FLOOR	SECOND FLOOR TO TERMINATION	SHAPE OF TIES
C1		A = 4-25# B = 4-20#	A = 4-25# B = 4-20#	A = 4-16# B = 4-16#	
C2		A = 4-25# B = 4-20#	A = 4-25# B = 4-20#	A = 4-16# B = 4-16#	
C3		A = 4-25# B = 4-25#	A = 4-25# B = 4-20#	A = 4-20# B = 4-20#	

ISOLATED FOOTING SCHEDULE :-

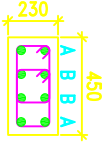
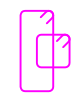
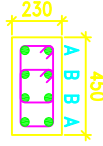

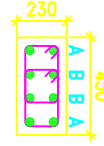

FOOTING MARK	FOOTING SIZE				REINF. IN BOTH DIRECTIONS	
	DIMENSION IN M.M.				ALONG L	ALONG B
	B	L	D	d		
F1	3250	3500	500	250	12T@125c/c	12T@125c/c
F2	3000	5000	450	--	AS/PLAN	AS/PLAN
F3	2700	3000	400	200	12T@150c/c	12T@150c/c
F4	2400	2600	350	150	12T@175c/c	12T@175c/c
F5	2100	2300	300	150	12T@200c/c	12T@200c/c



- NOTES:-**
- ALL DIMENSIONS SHOWN ARE IN M.M. (UNLESS MENTIONED)
 - FOLLOW WRITTEN DIMENSIONS ONLY; DO NOT MEASURE ANY DIMENSION.
 - BE 900 COMPLIANCE TO IS : 7788 (LATEST REVISION) SHALL BE USED FOR ALL REINFORCEMENT BARS.
 - FOR CONCRETE WORK USE CONCRETE GRADE OF M25 COMPLIANCE TO IS : 456 (LATEST REVISION).

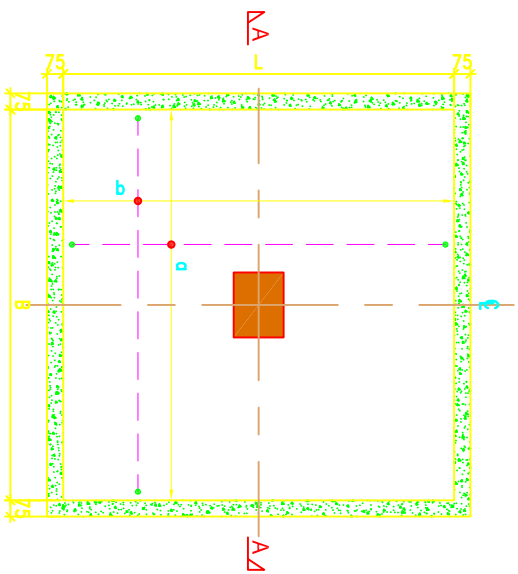
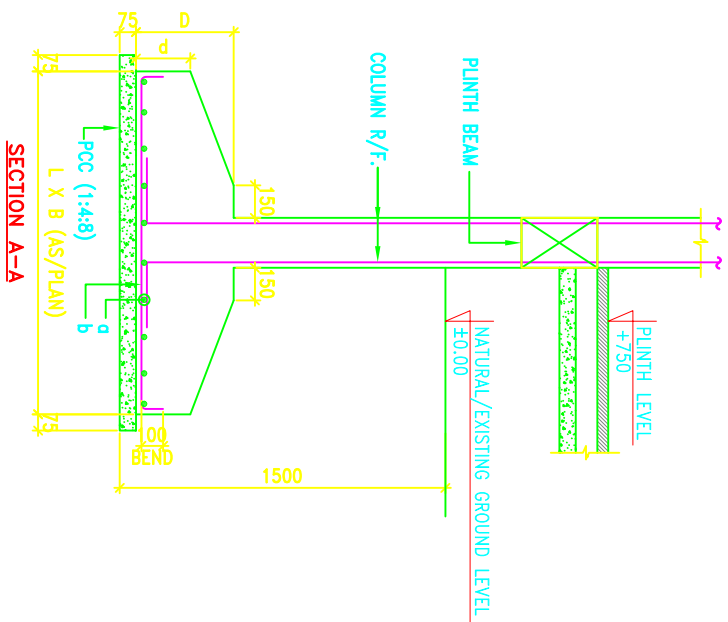
Title Sheet:-		Urban Night Shelter	
Drawing Title	Column Schedule & Foundation detail	Scale	As Shown
Date:-	15/02/2015	Sheet No. -	1
Drawing No.-02	SPUR/1/1	Rev. -	0
Prepared By:-	SUPPORT PROGRAMME FOR URBAN REFORMS IN BIHAR (SPUR)		

COLUMN SCHEDULE :-

COL. NO.	SHAPE	FOUNDATION TO FIRST FLOOR	FIRST TO SECOND FLOOR	SECOND FLOOR TO TERMINATION	SHAPE OF TIES
C1		A = 4-25# B = 4-20#	A = 4-25# B = 4-20#	A = 4-16# B = 4-16#	
C2		A = 4-25# B = 4-20#	A = 4-25# B = 4-20#	A = 4-16# B = 4-16#	
C3		A = 4-25# B = 4-25#	A = 4-25# B = 4-20#	A = 4-20# B = 4-20#	

ISOLATED FOOTING SCHEDULE :-

FOOTING MARK	FOOTING SIZE				REINF. IN BOTH DIRECTIONS	
	B	L	D	d	ALONG L	ALONG B
F1	3250	3500	500	250	12T@125c/c	12T@125c/c
F2	3000	5000	450	--	AS/PLAN	AS/PLAN
F3	2700	3000	400	200	12T@150c/c	12T@150c/c
F4	2400	2600	350	150	12T@175c/c	12T@175c/c
F5	2100	2300	300	150	12T@200c/c	12T@200c/c



- NOTES:-**
- ALL DIMENSIONS SHOWN ARE IN M.M. (UNLESS MENTIONED)
 - FOLLOW WRITTEN DIMENSIONS ONLY; DO NOT MEASURE ANY DIMENSION.
 - BE 900 COMPLIANCE TO IS : 7788 (LATEST REVISION) SHALL BE USED FOR ALL REINFORCEMENT BARS.
 - FOR CONCRETE WORK USE CONCRETE GRADE OF M25 COMPLIANCE TO IS : 456 (LATEST REVISION).

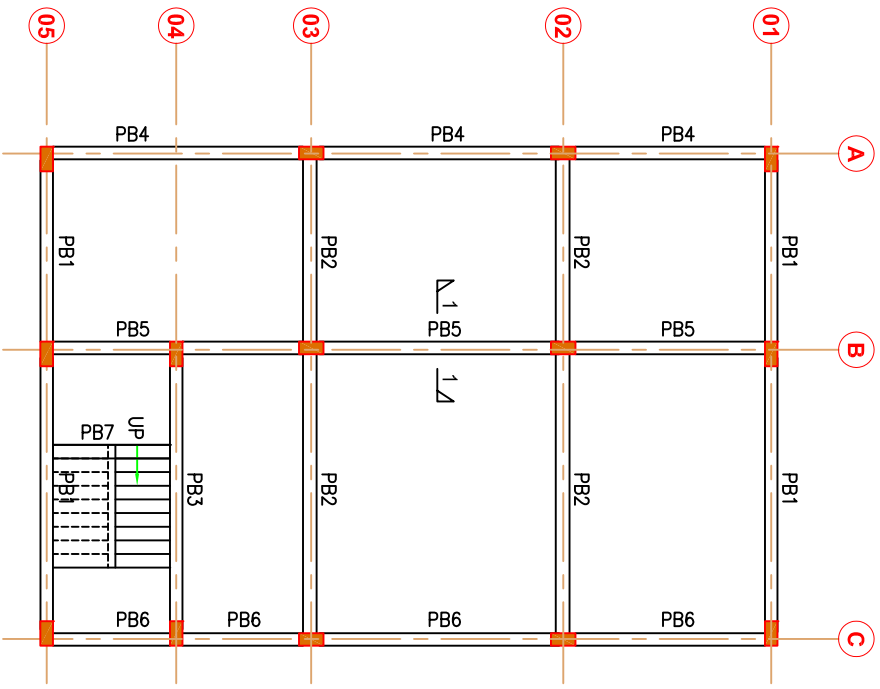
Title Sheet:- Urban Night Shelter

Drawing Title Column Schedule & Foundation detail

Date:- 15/02/2015 Scale As Shown Sheet No. - 1

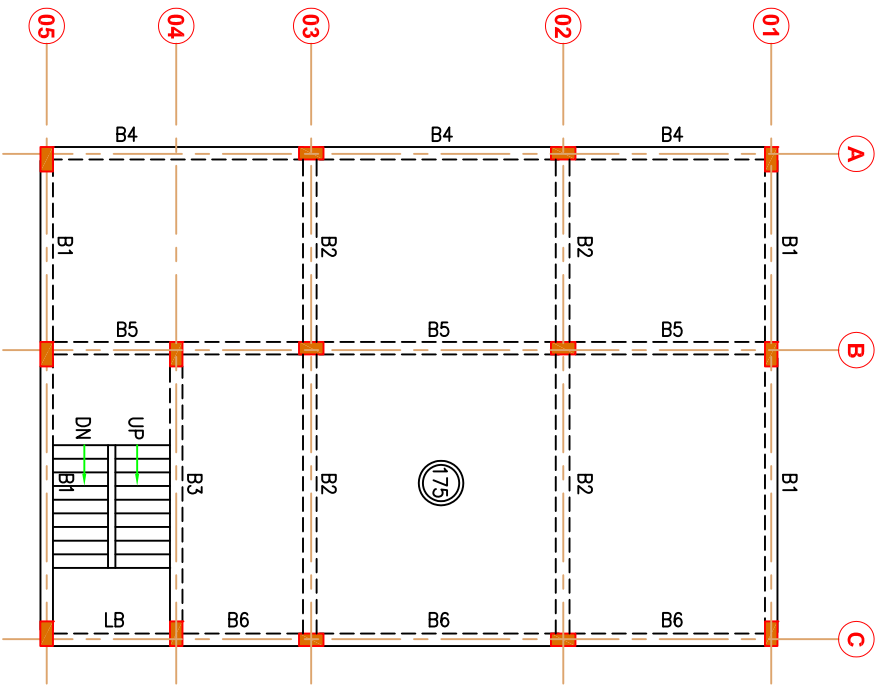
Drawing No.-02 SPUR/1/ Rev. 0

Prepared By: SUPPORT PROGRAMME FOR URBAN REFORMS IN BIHAR (SPUR)



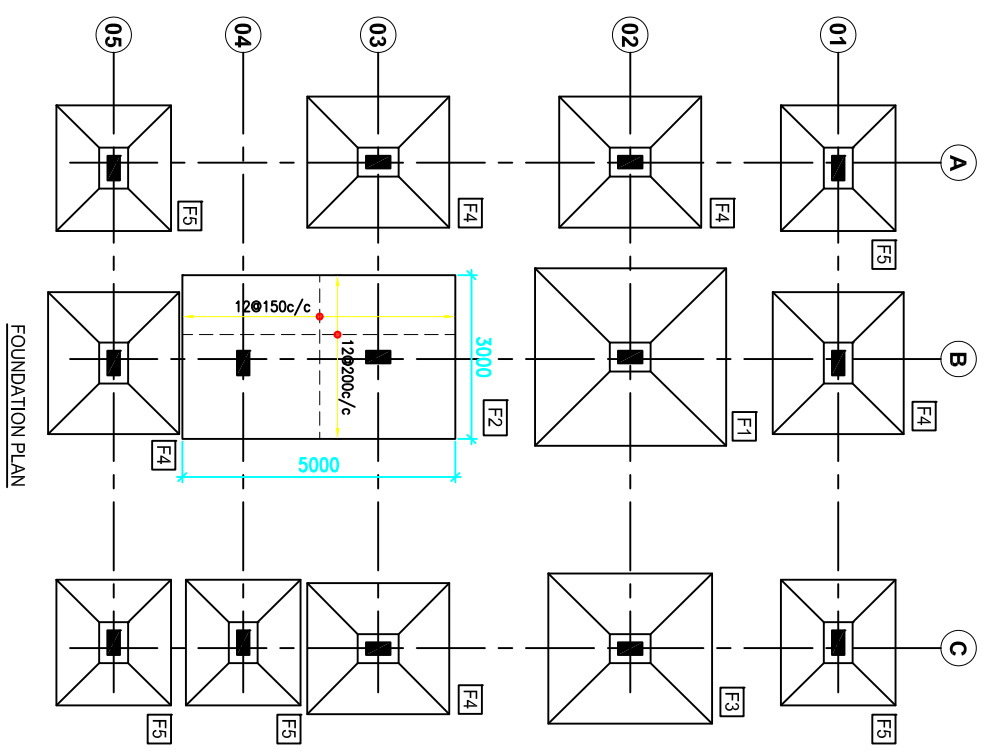
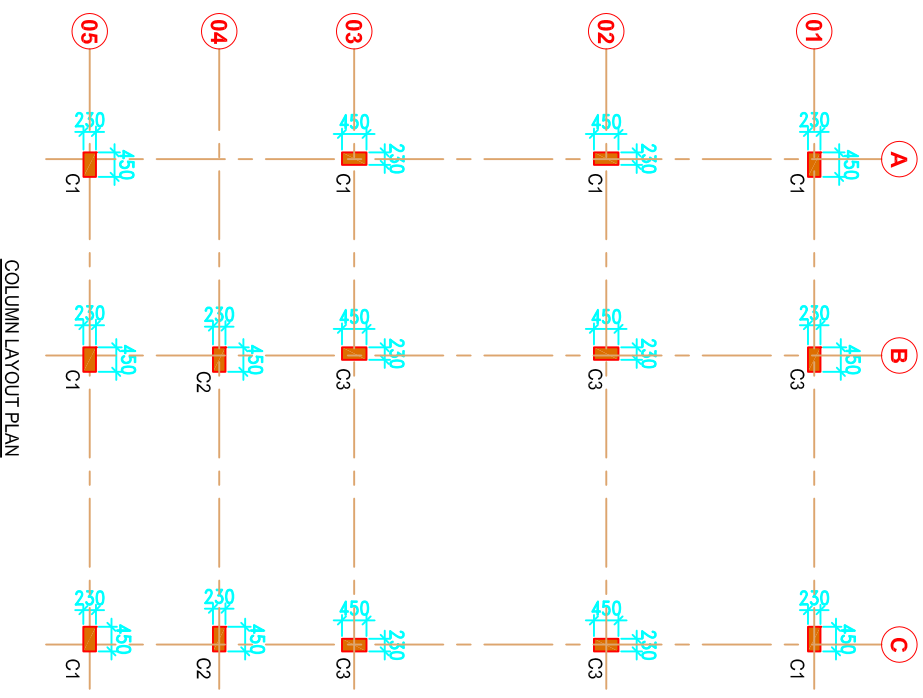
FRAMING PLAN AT PLINTH BEAM LEVEL

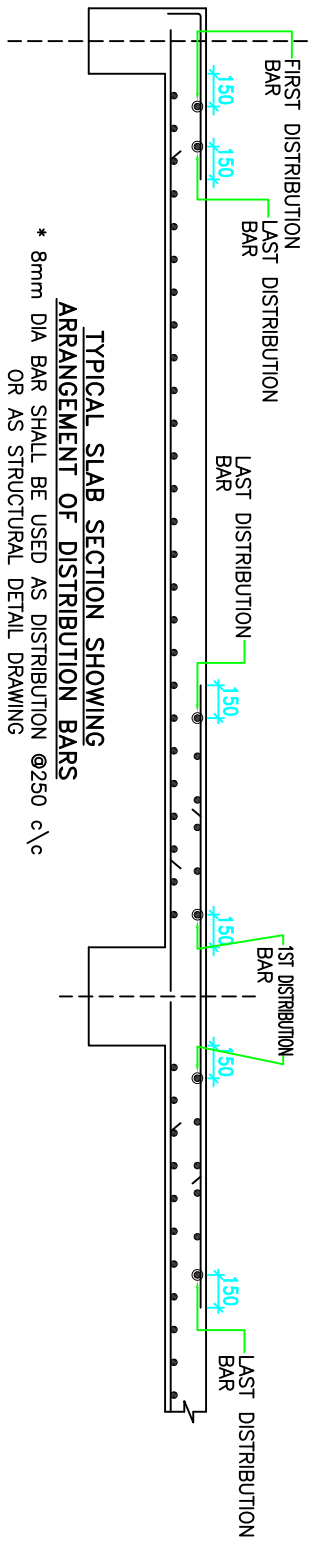
ALL BEAM SHALL BE 230x300



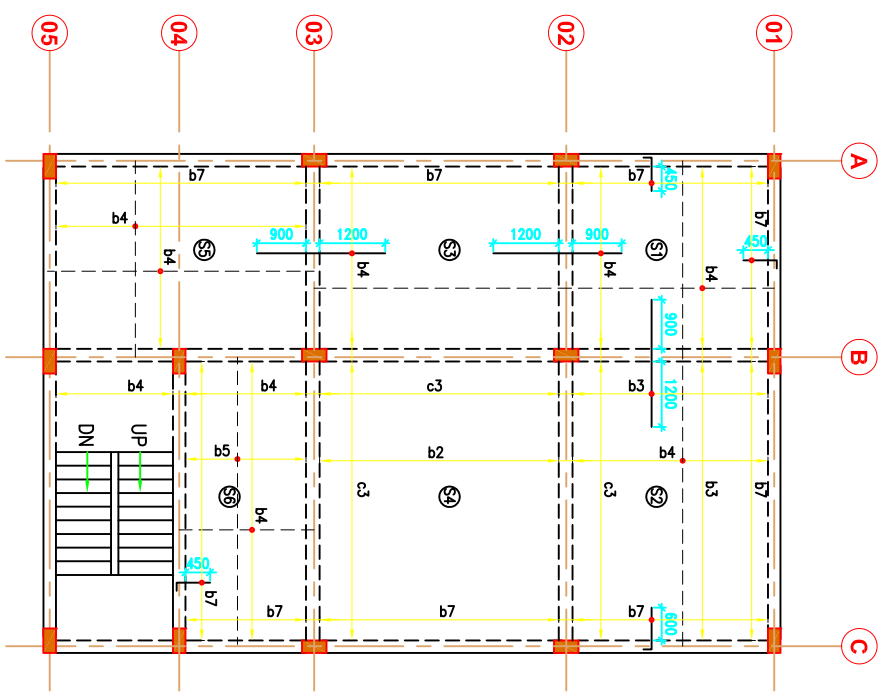
FRAMING PLAN AT TYPICAL FLOOR LEVEL

ALL BEAM SHALL BE 230x450
ALL SLAB THICKNESS SHALL BE 150 THK (UNLESS MENTIONED)





TYPICAL SLAB SECTION SHOWING
ARRANGEMENT OF DISTRIBUTION BARS
* 8mm DIA BAR SHALL BE USED AS DISTRIBUTION @250 c/c
OR AS STRUCTURAL DETAIL DRAWING



FRAMING PLAN AT TYPICAL FLOOR LEVEL

LEGENDS FOR SLAB

DIA SPACING	8	8	10
75	a1	b1	c1
100	a2	b2	c2
125	a3	b3	c3
150	a4	b4	c4
175	a5	b5	c5
200	a6	b6	c6
225	a7	b7	c7
250	a8	b8	c8

*a2 INDICATES 7 DIA BAR AT SPACING OF 100mm c/c.